



# AquaGuard™



## 100% WaterpRoof Flat Roof Coating

### Description

NXT AquaGuard is an exterior grade 100% waterproofing membrane designed for applications on external surfaces to protect against water ingress and weathering. Based on a Hybrid Technology, NXT AquaGuard can be used on vertical and horizontal surfaces as a high strength weatherproof protective membrane with high build elastomeric functionality for general roofing substrates. NXT AquaGuard provides an externally flexible protective coating to roofs with good anti-carbonation properties, breathability and resistance to varying climatic conditions. Nutech's proprietary resin technology provides a hard yet flexible surface with micro Nano-Technology for added water beading and contamination resistance for the life of the coating. Unlike conventional elastomeric roof coatings, Nutech's NXT AquaGuard will stay cleaner for longer and remain 100% waterproof under seasonal ponding water conditions.

### Application include:

- Flat Roofs
- Facades
- Parapet Walls
- Silos
- General Surfaces exposed to weather

### Product Features

- Ponding WaterProof\*
- Water-Based
- High Build, Elastomeric and Flexible
- High Gloss
- Resistant to fungi and Algae growth
- Resistant to salt and carbon attack
- Excellent adhesion
- Chalk resistant
- Available in a large colour range (Supplied to order. No minimum quantity)
- Resists light foot traffic
- Can be left exposed or over coated with NXT Cool Coat High Gloss or other Acrylic coatings
- Solvent free and non Hazardous
- User Friendly Water Clean-up
- Long shelf-life, Re-useable on other jobs
- Easy application by brush, roller or standard airless spray equipment.



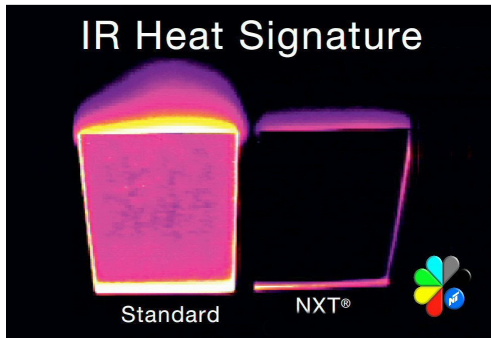


# AquaGuard™



## 100% WaterpRoof Flat Roof Coating

- Contains Infrared Heat Reflective Technology.
- Contains Self Cleaning Nano-Technology.



### Typical Properties

#### Wet Form

Specific Gravity: 1.28kg/litre  
 Appearance: Viscous liquid, Standard Nutech colour options available

#### Cured Membrane

Elongation >330%  
 Tensile Strength >1.45 MPa  
 Accelerated Weathering No changes after 1000 hours exposure (Xenon Arc method)  
 Shore A Hardness 54

### Application Procedure

- Surfaces must be clean, dry, suitably prepared and in a sound state prior to beginning the application. Care should be taken to not damage the roofing surface during the high pressure cleaning process.
- Nutech highly recommends the use of re enforcing Poly Fabric on all roof joints, penetrations and surface overlaps to ensure a seamless roofing surface for a 100% waterproof roofing surface as part of a priming system before NXT AquaGuard is applied.
- Substrates are recommended to be primed before applying the AquaGuard. There are a range of Nutech Primers suitable for a variety of substrates and applications,
- AquaGuard should be lightly stirred before using, and can be applied to both vertical and horizontal surfaces using a roller or brush. The product can be applied using an airless spray unit with a 20-30 thou tip.
- Depending on application and level of protection required, desired film thickness formed will vary.





# AquaGuard™



## 100% WaterpRoof Flat Roof Coating

- **Application Rate 1:** When using Nutech High Build Asphalt Bleed blocking primer and NXT AquaGuard 100% WaterpRoof Flat Roof Coating application can be applied at a rate of 91 to -115 s/mt per 20 liter in total application achieved in a recommended 2 coats application.
- **Application Rate 2:** When applying NXT AquaGuard 100% WaterpRoof Flat Roof Coating without a primer, application should be from 45-60 s/mt per 20 liter in total application achieved in a recommended 2 coats application.

**Available in High Gloss White and over 36 Colours:**

### Drying Times:

<i>Recoat</i>	4 hours
<i>Dry Film</i>	24 hours
<i>Weatherproof</i> (Vertical)	24 hours
<i>Weatherproof</i> (Horizontal)	72 hours

### Important Notes:

- NXT AquaGuard is not designed for use as an exposed membrane under vehicular or heavy foot traffic areas.
- For roof applications NXT AquaGuard is to be applied to surfaces with appropriate falls and drainage.
- NXT AquaGuard is not designed to be immersed or applied to subterranean areas.
- Product while in its wet state will clean up with water.
- Once the product has dried it will need to be removed by mechanical means or with solvent cleaners.
- **Ponding Water\*:**  
NXT AquaGuard 100% WaterpRoof Flat Roof coating is not affected by ponding water, however:  
*The National Roofing Contractors Association considers ponding water on any roof unacceptable.*  
*(See the NRCA Roofing and Waterproofing Manual).*

### Storage Instructions:

Best storage conditions is in a dry area at room temperature, avoiding humidity and frost.

### Packaging:

Nutech Paint holds 2 sizes in this Product. 20 Liters & 200 Liters



# AquaGuard™



## 100% WaterpRoof Flat Roof Coating

DISCLAIMER: Warranty and Limitation of liability:

### Warranty

Nutech warrants its products to be free from defects in material and workmanship. Nutech's sole obligation and Buyer's exclusive remedy in connection with the products shall be limited, at Nutech's option, to either replacement of products not conforming to this Warranty or credit to Buyer's account in the invoiced amount of the nonconforming products.

Any claim under this Warranty must be made by Buyer to Nutech in writing within five (5) days of Buyer's discovery of the claimed defect, but in no event later than the expiration of the applicable shelf life, or one year from the delivery date, whichever is earlier. Buyer's failure to notify Nutech of such non-conformance as required herein shall bar Buyer from recovery under this Warranty.

Nutech makes no other warranties concerning the product. No other warranties, whether express, implied, or statutory, such as warranties of merchantability or fitness for a particular purpose, shall apply. In no event shall Nutech be liable for consequential or incidental damages.

Any recommendation or suggestion relating to the use of the products made by Nutech, whether in its technical literature, or in response to specific inquiry, or otherwise, is based on data believed to be reliable; however, the products and information are intended for use by Buyers having requisite skill and know-how in the industry, and therefore it is for Buyer to satisfy itself of the suitability of the products for its own particular use and it shall be deemed that Buyer has done so, at its sole discretion and risk. Variation in environment, changes in procedures of use, or extrapolation of data may cause unsatisfactory results.

### Limitation of Liability

Nutech's liability on any claim of any kind, including claims based upon Nutech's negligence or strict liability, for any loss or damage arising out of, connected with, or resulting from the use of the products, shall in no case exceed the purchase price allocable to the products or part thereof which gives rise to the claim. In no event shall Nutech be liable for consequential or incidental damages.

### Important Note:

The information given on this data sheet is based on many years experience and is correct to the best of our knowledge. However since the use of our product, surface conditions, weather and a number of other factors are completely beyond our control, we can only be responsible for the quality of our product at the time of dispatch. For more information please contact our Company. As this information is of a general nature, we cannot assume any responsibility in individual cases.

**Contact Nutech Paint Technical Service 714 225 3688**  
**Read "Safety Data" Instruction and "First Aid" Instructions on this container**